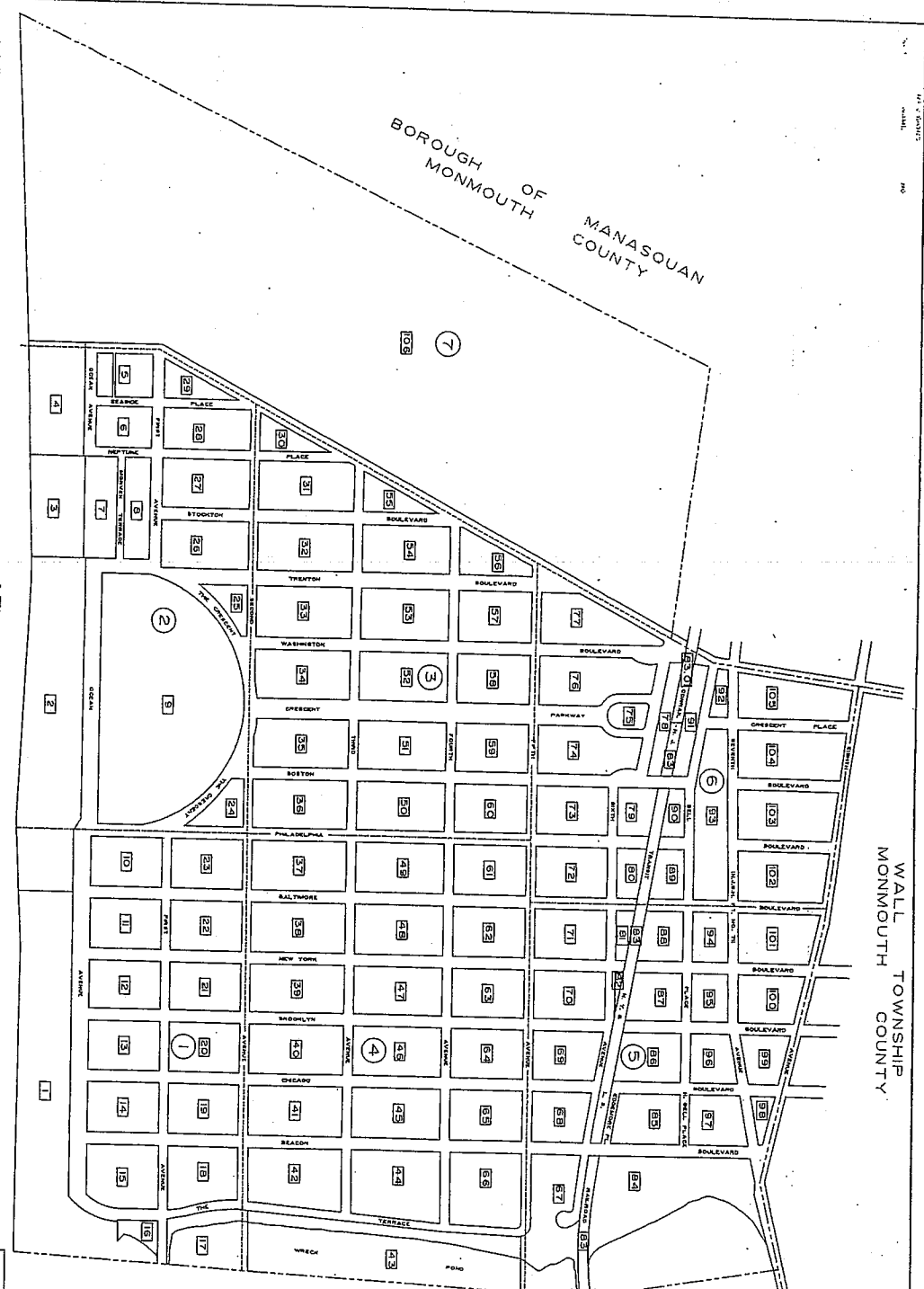


KEY MAP

WALL TOWNSHIP
MONMOUTH COUNTY

BOROUGH OF MANASQUAN
COUNTY



BOROUGH OF SPRING LAKE
MONMOUTH COUNTY

BOROUGH OF
SPRING LAKE HEIGHTS
MONMOUTH COUNTY

ATLANTIC OCEAN

LEGEND

2 (2) BULK SUBJECT

3 (3) DETAIL SHEET

IN SPIN IN MATTER

1 (1) 1/4 SECTION

2 (2) 1/2 SECTION

3 (3) 3/4 SECTION

4 (4) SECTION

5 (5) 1/4 SECTION

6 (6) 1/2 SECTION

7 (7) 3/4 SECTION

8 (8) SECTION

TAX MAP
BOROUGH OF SEA GIRT
MONMOUTH COUNTY
NEW JERSEY
SCALE: 1"=300'
MAY, 2003
PETER R. AVAKIAN, P.E. & L.S.
BOROUGH ENGINEER
788 WAYSIDE ROAD
NEPTUNE, N.J.

1. HERBY STAFF'S THIS TAX MAP AND ANY SUBSEQUENT SURVEY HAS BEEN MADE UNDER AN INDEPENDENT SURVEYOR, NEW JERSEY'S WITH THE LAND OF THE STATE OF NEW JERSEY.

PR

REGISTERED PROFESSIONAL ENGINEER

1. HERBY STAFF'S THIS TAX MAP AND ANY SUBSEQUENT SURVEY HAS BEEN MADE UNDER AN INDEPENDENT SURVEYOR, NEW JERSEY'S WITH THE LAND OF THE STATE OF NEW JERSEY.

2. THE STATE OF NEW JERSEY HAS THE SOLE AND EXCLUSIVE RIGHT TO REPRODUCE THIS MAP FOR OFFICIAL PURPOSES.

3. THE STATE OF NEW JERSEY HAS THE SOLE AND EXCLUSIVE RIGHT TO REPRODUCE THIS MAP FOR OFFICIAL PURPOSES.

4. THE STATE OF NEW JERSEY HAS THE SOLE AND EXCLUSIVE RIGHT TO REPRODUCE THIS MAP FOR OFFICIAL PURPOSES.

5. THE STATE OF NEW JERSEY HAS THE SOLE AND EXCLUSIVE RIGHT TO REPRODUCE THIS MAP FOR OFFICIAL PURPOSES.

6. THE STATE OF NEW JERSEY HAS THE SOLE AND EXCLUSIVE RIGHT TO REPRODUCE THIS MAP FOR OFFICIAL PURPOSES.

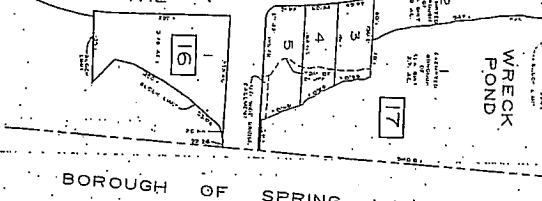
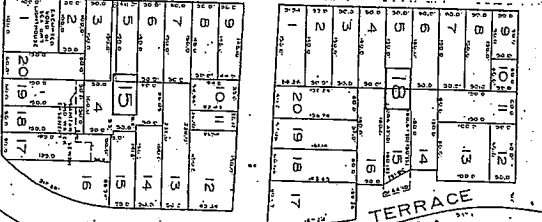
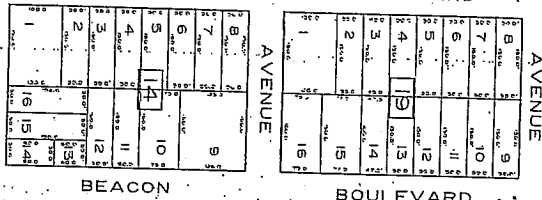
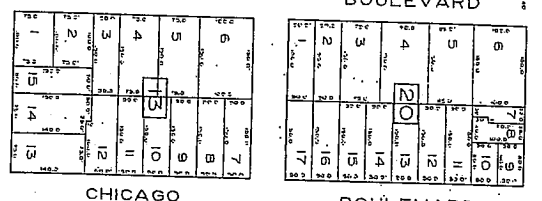
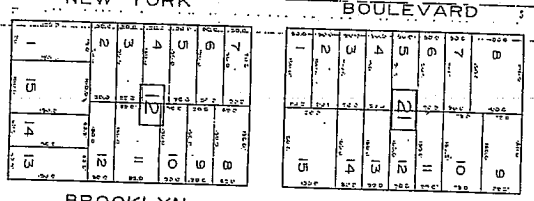
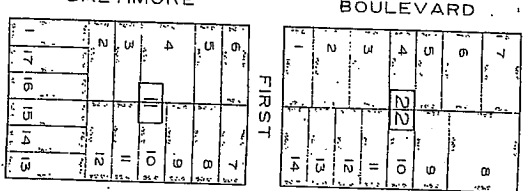
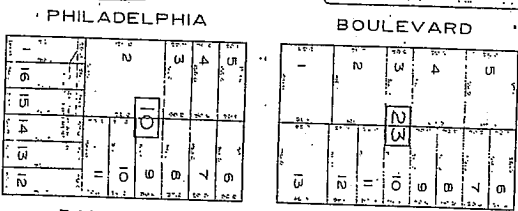
7. THE STATE OF NEW JERSEY HAS THE SOLE AND EXCLUSIVE RIGHT TO REPRODUCE THIS MAP FOR OFFICIAL PURPOSES.

8. THE STATE OF NEW JERSEY HAS THE SOLE AND EXCLUSIVE RIGHT TO REPRODUCE THIS MAP FOR OFFICIAL PURPOSES.

9. THE STATE OF NEW JERSEY HAS THE SOLE AND EXCLUSIVE RIGHT TO REPRODUCE THIS MAP FOR OFFICIAL PURPOSES.

10. THE STATE OF NEW JERSEY HAS THE SOLE AND EXCLUSIVE RIGHT TO REPRODUCE THIS MAP FOR OFFICIAL PURPOSES.

SHEET 2
THE CRESCENT



BOROUGH OF SPRING LAKE
MONMOUTH COUNTY

SHEET 4

ATLANTIC OCEAN

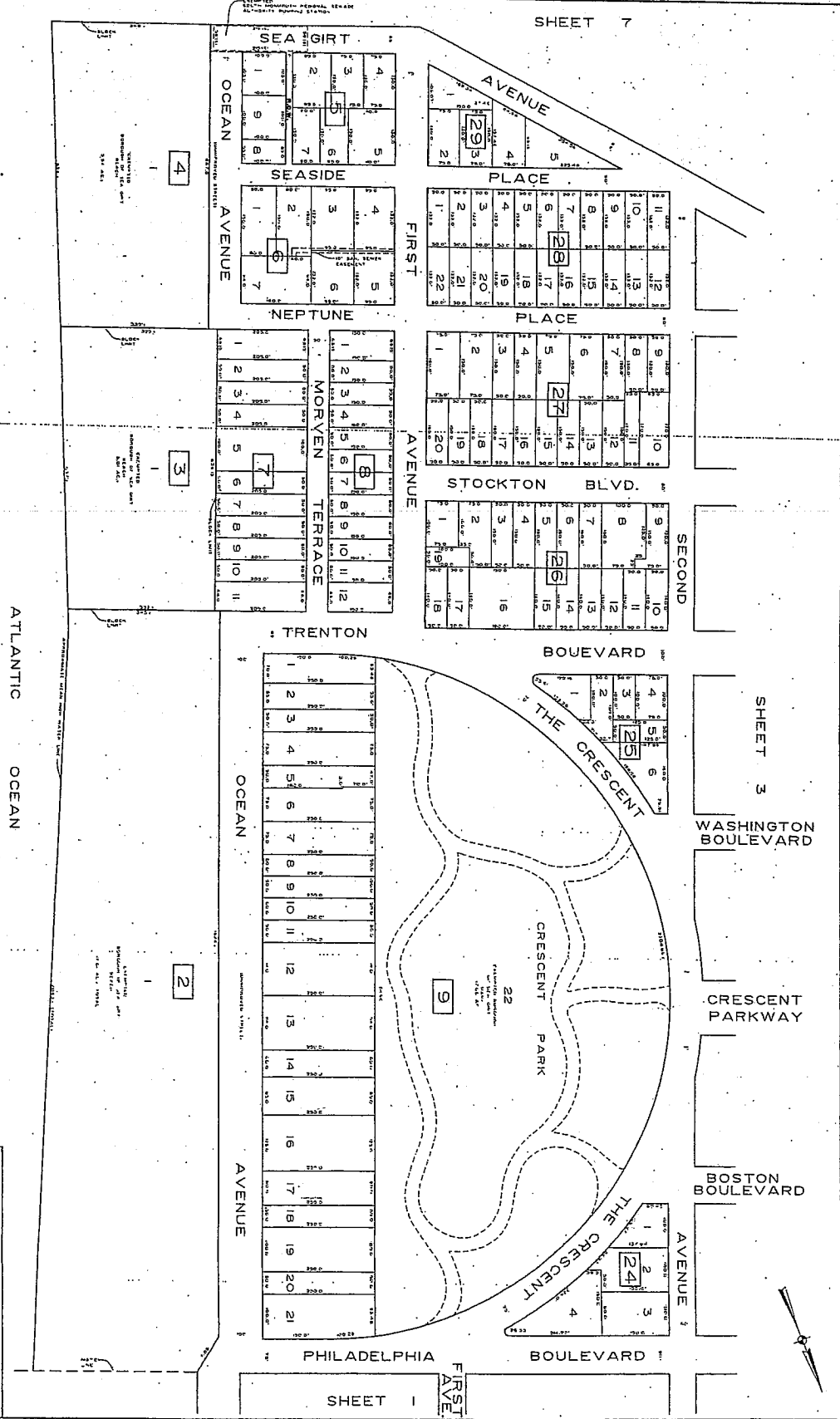
THIS SHEET IS A SCANNED COPY OF THE TAX MAP
PREPARED BY WILSON HOPKINS, L.L.C.
DECEMBER 2003. THE OFFICE OF THE ENGINEER,
COUNTY OF MONMOUTH, NEW JERSEY, HAS
REVIEWED AND APPROVED THIS MAP.

Borough of Spring Lake
 Monmouth County
 New Jersey
 May, 2003
 Peter R. Avakian, P.E. & A.S.T.
 Borough Engineer
 788 Wayside Road
 Neptune, NJ

TAX MAP
BOROUGH OF SEA GIRT
 MONMOUTH COUNTY
 NEW JERSEY
 SCALE: 1"=100'
 PETER R. AVAKIAN, P.E. & A.S.T.
 BOROUGH ENGINEER
 788 WAYSIDE ROAD
 NEPTUNE, N.J.



THIS SHEET IS A SCANNED COPY OF THE TAX MAP DOCUMENT PREPARED BY THE BOROUGH ENGINEER. THE ORIGINAL DOCUMENT IS ON FILE IN THE BOROUGH ENGINEER'S OFFICE. ANY CHANGES TO THIS SHEET WILL BE INDICATED BY A RED LINE OR A RED NUMBER.



ATLANTIC OCEAN

TAX MAP
 BOROUGH OF SEA GIRT
 MONMOUTH COUNTY NEW JERSEY
 SCALE: 1"=100'
 PETER R. AVAKIAN, P.E. B.L.S.
 BOROUGH ENGINEER
 788 WAYSIDE ROAD
 NEPTUNE, N.J.

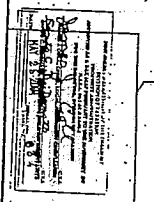
THIS SHEET IS A SCANNED COPY OF THE TAX MAP
ORIGINALLY PREPARED BY WILSON MORRIS, MAP
DRAWER IN THE OFFICE OF THE ENGINEER,
FROM 50 N. AVENUE, NEW JERSEY, N.J.



THE CRESCENT

SHEET 2

SHEET 6

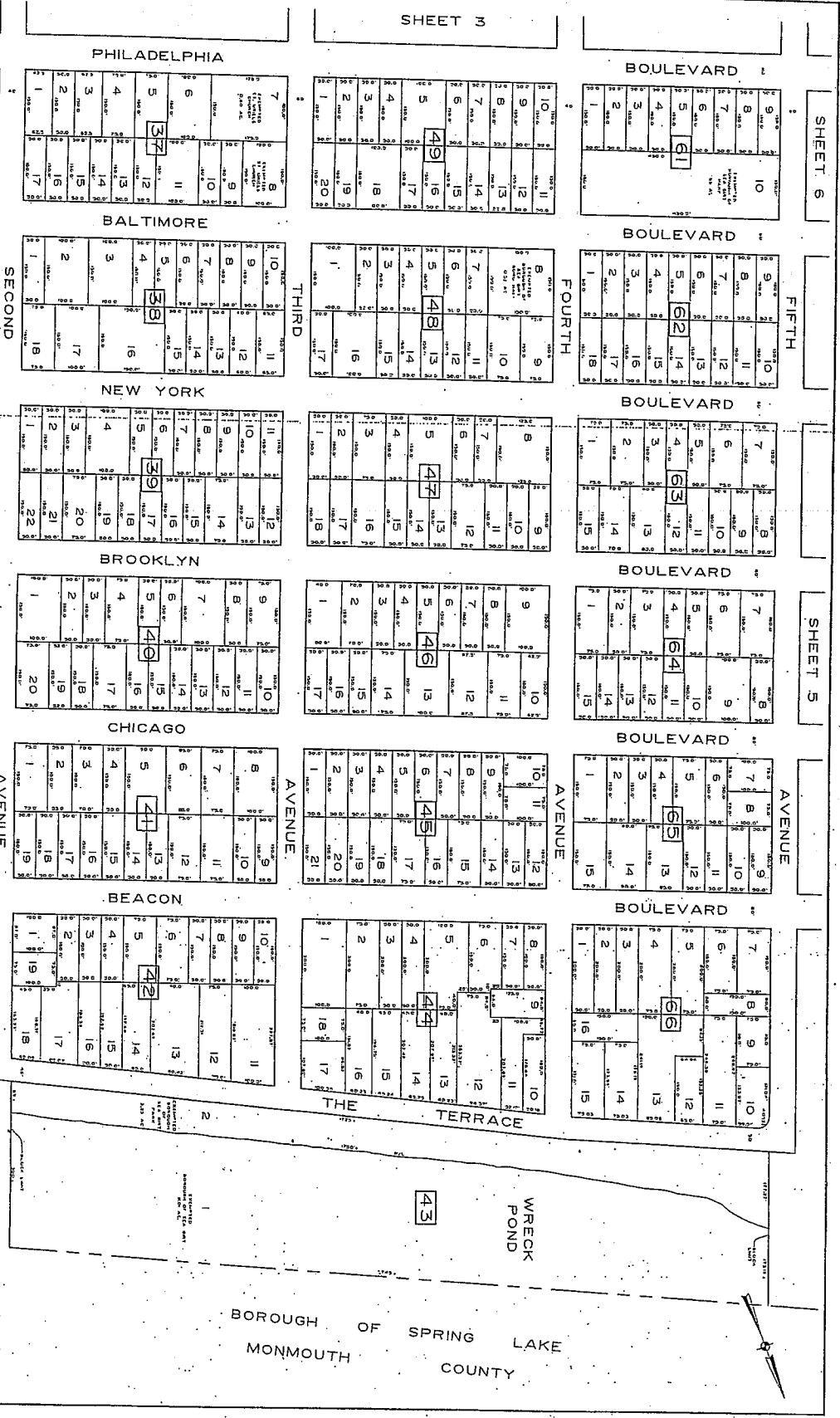


TAX MAP
 BOROUGH OF SEA GIRT
 MONMOUTH COUNTY NEW JERSEY
 SCALE: 1"=100'
 PETER R. AVAKIAN, P.E., B.L.S.
 BOROUGH ENGINEER
 788 WAYSIDE ROAD
 NEPTUNE, N.J.



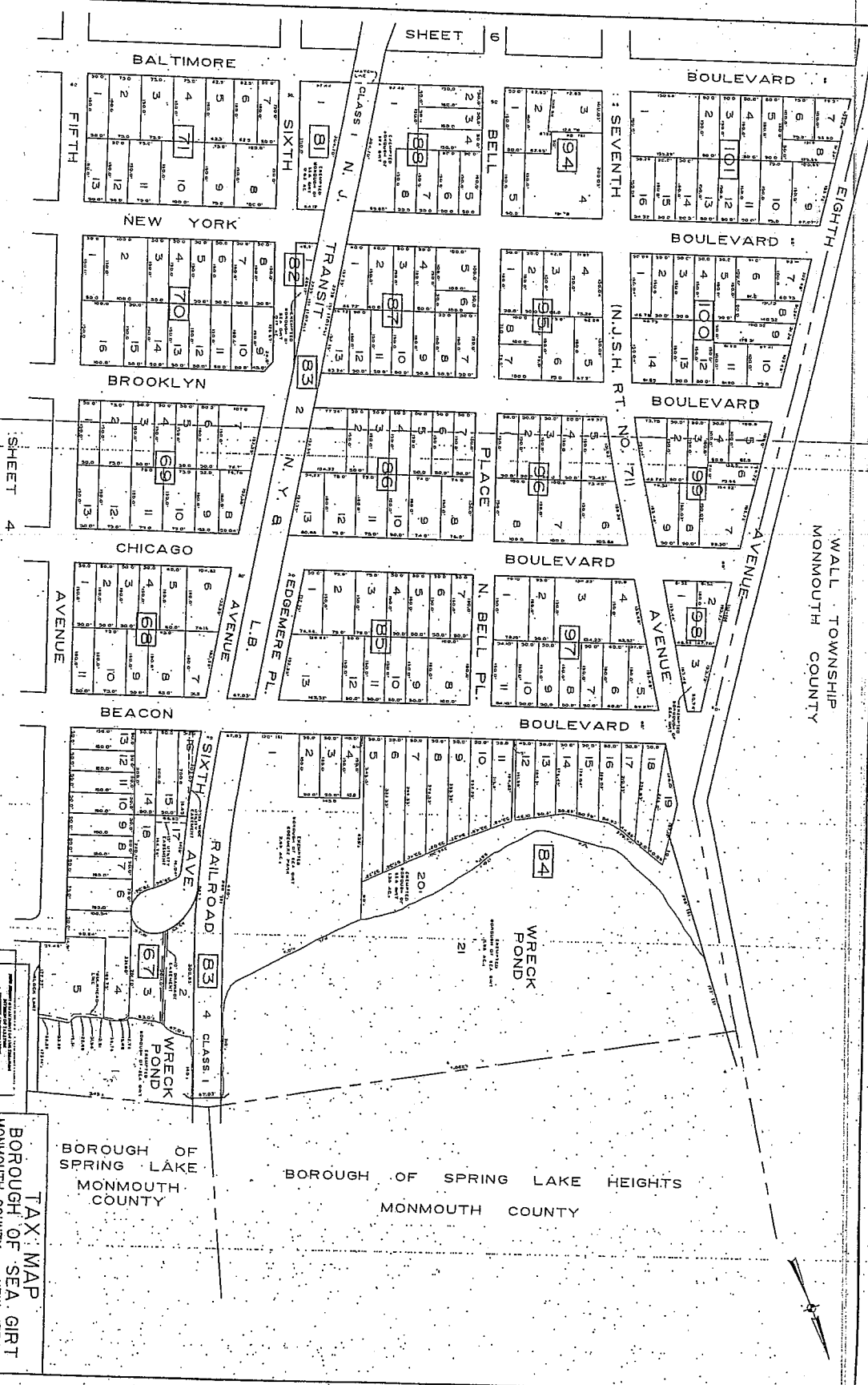
THIS SHEET IS A SCANNED COPY OF THE TAX MAP ORIGINAL PREPARED BY WILSON JOHNSON, L.P.A. ON FILE IN THE OFFICE OF THE ENGINEER 1500 N. AVAKIAN, NEW BRUNSWICK, NJ.

SHEET 1



TAX MAP
 BOROUGH OF SEA GIRT
 MONMOUTH COUNTY, NEW JERSEY
 SCALE: 1"=100'
 PETER R. AVAKIAN, P.E. & B.L.S.
 BOROUGH ENGINEER
 788 WAYSIDE ROAD
 NEPTUNE, N.J.

THIS SHEET IS A SCANNED COPY OF THE TAX MAP
 PREPARED BY THE BOROUGH OF SEA GIRT
 ENGINEER AND THE ORIGINAL APPROVED MAP IS
 ON FILE IN THE OFFICE OF THE BOROUGH ENGINEER
 LEON S. AVAKIAN, INC. NEW JERSEY



BOROUGH OF
 SPRING LAKE
 MONMOUTH COUNTY

BOROUGH OF SPRING LAKE HEIGHTS
 MONMOUTH COUNTY

WALL TOWNSHIP
 MONMOUTH COUNTY

TAX MAP
 BOROUGH OF SEA GIRT
 MONMOUTH COUNTY NEW JERSEY
 SCALE: 1"=100'
 PETER R. AVAKIAN, P.E. B.L.S.
 BOROUGH ENGINEER
 788 WAYSIDE ROAD
 NEPTUNE, N.J.

BOROUGH OF MANASQUAN
MONMOUTH COUNTY

THIS SHEET IS A SCANNED COPY OF THE TAX MAP
DESIGNED AND DRAWN BY WILSON ENGINEERING, L.P.,
A PROFESSIONAL ENGINEERING FIRM, INCORPORATED
IN THE STATE OF NEW JERSEY, AND IS
NOT TO BE USED FOR ANY OTHER PURPOSE.

BOROUGH OF MANASQUAN
MONMOUTH COUNTY

DATE: 11/11/03
DRAWN BY: J. HARRIS

103

SHEET 6

SHEET 3

SHEET 2

CONRAIL
SIXTH AVE.
WASHINGTON

FIFTH AVE.
TRENTON

SEA
FOURTH AVE.

ST. JOCKTON
GIRT

THIRD AVE.

NEPTUNE
AVENUE

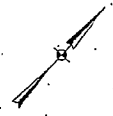
SECOND AVE.

SEASIDE
BLVD

FIRST AVE.

OCEAN AVE.

ATLANTIC OCEAN



<p>WILSON ENGINEERING, L.P. A PROFESSIONAL ENGINEERING FIRM, INCORPORATED IN THE STATE OF NEW JERSEY 788 WAYSIDE ROAD NEPTUNE, N.J. 08540 TEL: 732-825-1100 FAX: 732-825-1101 WWW.WILSON-ENG.COM</p>	<p>DATE: 11/11/03 DRAWN BY: J. HARRIS</p>
--	---

TAX MAP
BOROUGH OF SEA GIRT
MONMOUTH COUNTY
NEW JERSEY
SCALE: 1"=200'
PETER R. AVAKIAN, P.E. & L.S.
BOROUGH ENGINEER
788 WAYSIDE ROAD
NEPTUNE, N.J.